

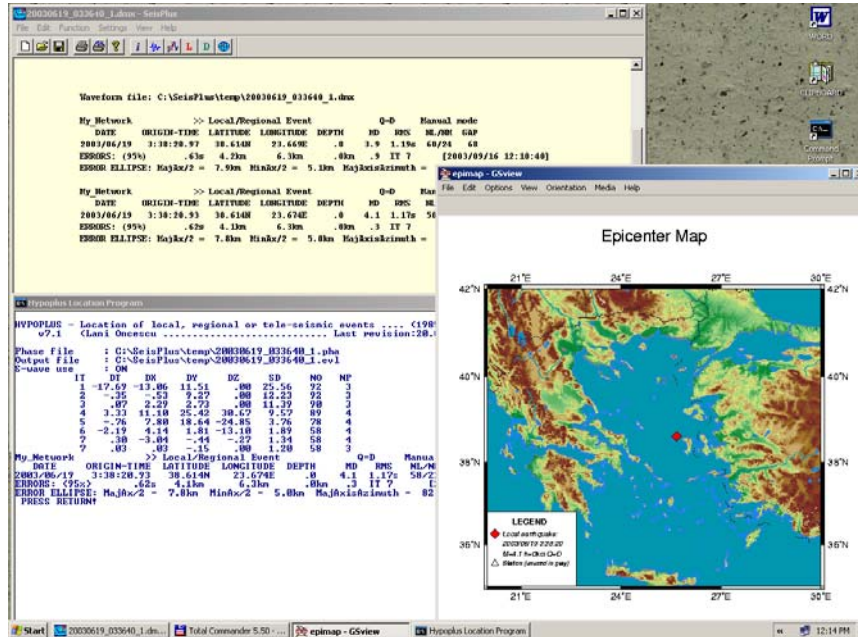


FEATURES

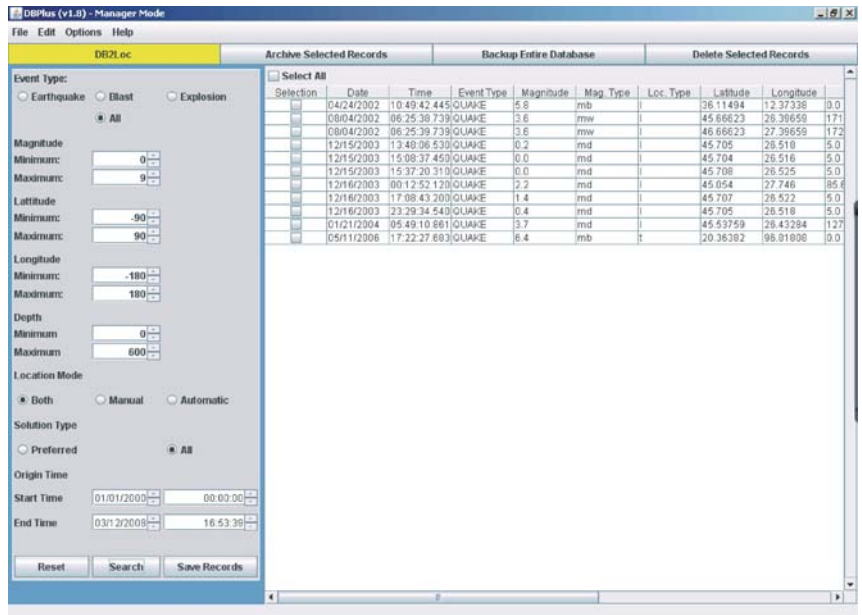
- Fully integrated
- Database operation
- Arrival time picking, event location (single and JHD) and magnitude, moment tensor inversion, import and export

SEISPLUS performs waveform display, automatic and manual arrival time picking, hypocenter location of local and teleseismic events, magnitude determination, epicenter map plotting, as well as import/export of several data and phase formats. Data can be input in CSS, SEISAN, SUDS, miniSEED or GSE for waveform files, and HYPO71, SEISAN or SMART for phase files. Processed waveforms can be saved in SUDS, GSE, SAC or Mini-SEED format. Phases and locations are saved as flat files or in a MySQL® database using the optional **DBPlus** module. Another optional module **MathPlus** offers the mathematical tools for signal processing: FFT, filtering, PSD, de-trending, integration, differentiation, convolution/deconvolution, response spectra, JMA intensity, H/V ratios, etc.

SEISPLUS Analysis Package



Location and epicenter plot (above); DBPlus interface (below)

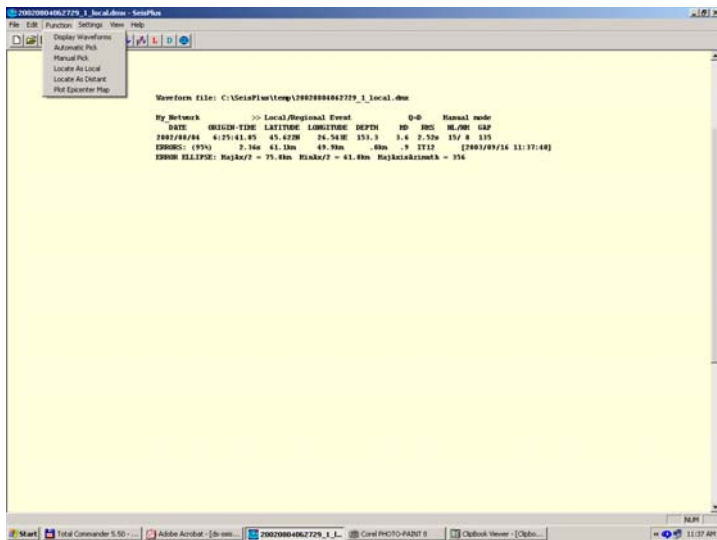


10755 SANDEN DRIVE, DALLAS, TEXAS 75238-1336
 Phone: 214-221-0000 Fax: 214-343-4400
 email: info@geoinstr.com Web: www.geoinstr.com

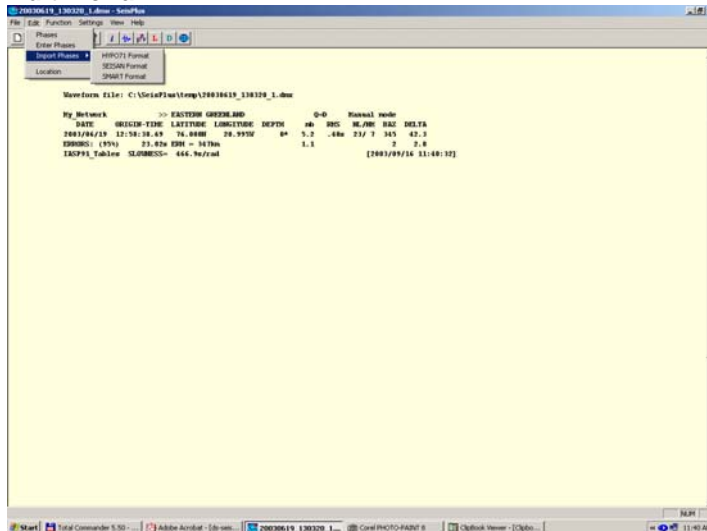
SOME OF SEISPLUS DIALOG BOXES

Enter Phase Dialog Box:

Function Menu:



Edit Menu:



Setup Dialog Box of Location Program HYPOPLUS:

Velocity Model Input Dialog Box:

Layer number	Layer thickness (km)	P-wave velocity (km/sec)	Layer density (kg/m3)
1.	20.	5.501	2550.
2.	20.	6.768	2750.
3.	30.	7.942	3200.
4.	30.	8.013	3300.
5.	30.	8.174	3400.
6.	40.	8.301	3500.
7.	60.	8.387	3600.
8.			
9.			
10.			
11.			
12.			
13.			
14.			
15.			
16.			
17.			
18.			
19.			
20.			

Waveform Info Display Window:

Network	Station	Component	Begin Date and Time	Length (s)	Sample Rate (Hz)	Sensor	Motion	Units
RO	VRIST	SHZ	2002/08/04 06:24:25.300	460.800	50.00	-	v	d
RO	VRILS	SHZ	2002/08/04 06:24:25.300	460.800	50.00	-	v	d
RO	BRDST	SHZ	2002/08/04 06:24:25.300	460.800	50.00	-	v	d
RO	BRDLS	SHZ	2002/08/04 06:24:25.300	460.800	50.00	-	v	d
RO	PPEST	SHZ	2002/08/04 06:24:25.300	460.800	50.00	-	v	d
RO	PPELS	SHZ	2002/08/04 06:24:25.300	460.800	50.00	-	v	d
RO	HARRS	SHZ	2002/08/04 06:24:25.300	460.800	50.00	-	v	d
RO	CYDST	SHZ	2002/08/04 06:24:25.300	460.800	50.00	-	v	d
RO	CFRST	SHZ	2002/08/04 06:24:25.300	460.800	50.00	-	v	d
RO	CFRLS	SHZ	2002/08/04 06:24:25.300	460.800	50.00	-	v	d
RO	ISRST	SHZ	2002/08/04 06:24:25.300	460.800	50.00	-	v	d
RO	ISRLS	SHZ	2002/08/04 06:24:25.300	460.800	50.00	-	v	d
RO	MLRST	SHZ	2002/08/04 06:24:25.300	460.800	50.00	-	v	d
RO	MLRLS	SHZ	2002/08/04 06:24:25.300	460.800	50.00	-	v	d
RO	MLRNS	SHN	2002/08/04 06:24:25.300	460.800	50.00	-	v	d
RO	MLRES	SHE	2002/08/04 06:24:25.300	460.800	50.00	-	v	d
RO	MTURS	SHZ	2002/08/04 06:24:25.300	460.800	50.00	-	v	d
RO	MTULS	SHZ	2002/08/04 06:24:25.300	460.800	50.00	-	v	d